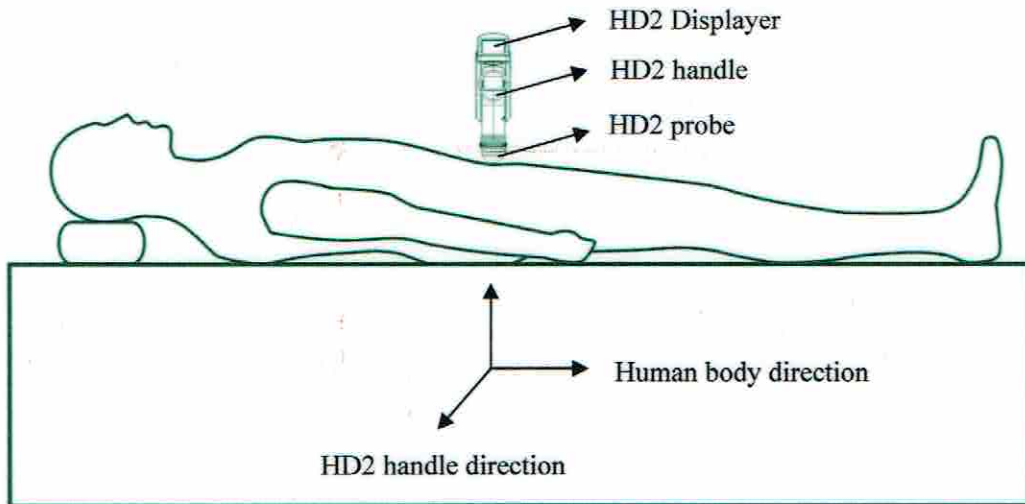


HD2 Quick Operation Guide



Operation order:

Power on→smear coupling agent→press scanning key→move probe for searching max area of bladder→press the key again to obtain the result→long press voice key to enter patient information→release voice key to save audio and image message→power off

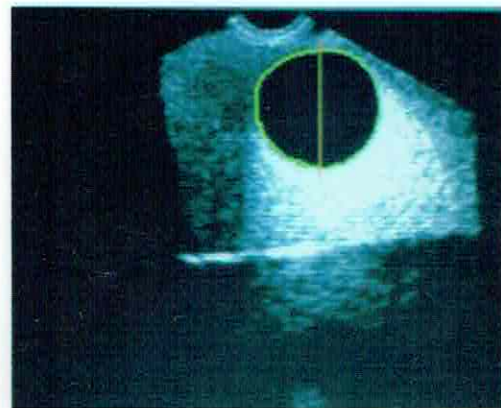
Probe site:

Move probe at 3cm distance from superior margin of pubic symphysis, it must keep vertical line between the direction of handle and patient horizontal direction.

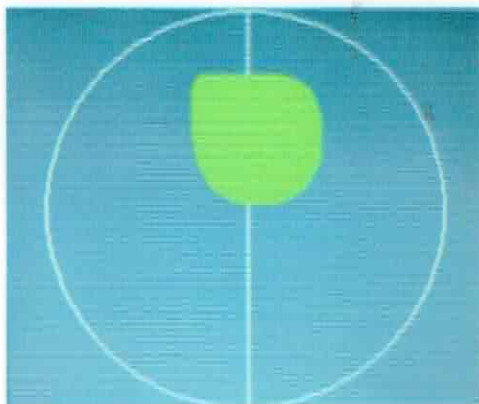
When bladder is small volume, need to incline probe for detecting bladder, try to make the bladder image medially and maximum for decreasing errors.



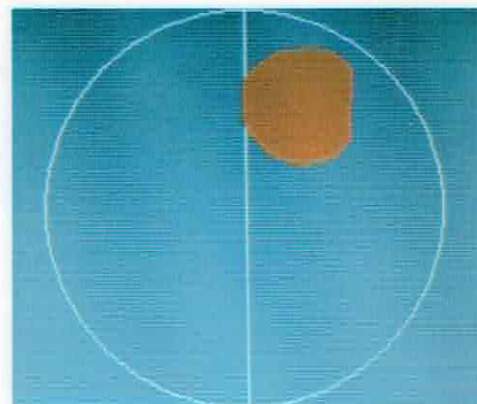
Expert mode: Medially and Maximum (correct)



Expert mode: Off center and not big enough (error)



Easy mode: Medially and Maximum (correct)



Easy mode: Off center and not big enough (error)